

Total Synthesis of (-)-Preswinholide A

Scheme 1

Ian Paterson,* Julian D. Smith, Richard A. Ward, and John G. Cumming

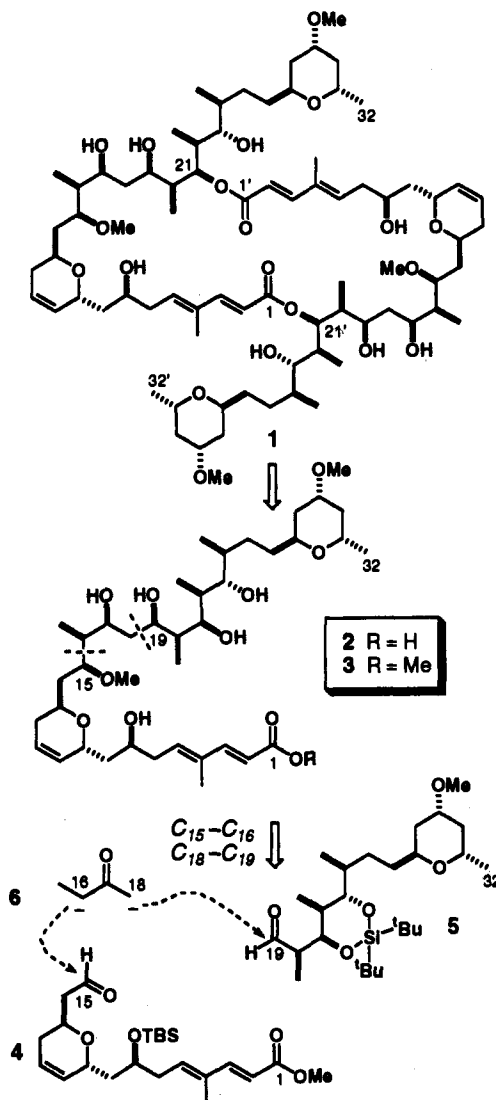
University Chemical Laboratory
Lensfield Road, Cambridge, CB2 1EW, UK

Received October 27, 1993

The members of the swinholide family of marine-derived macrodiolides exhibit potent cytotoxic activity against a variety of human carcinoma cell lines.¹⁻³ Swinholide A (1), isolated¹ from the marine sponge *Theonella swinhoi*, is a symmetrical dimer² formed through the union of two monomeric units 2 to generate a 44-membered macrocyclic ring (Scheme 1). This secoacid 2, termed preswinholide A, has recently been isolated^{3a,4} from *Theonella swinhoi*, and its methyl ester 3 has been obtained by methanolysis of swinholide A.^{2c} The structural complexity of this unique class of polyketide, combined with the associated biological activity and scarcity of natural supply, makes the swinholides and other related macrolides^{5d} important targets for chemical synthesis. Herein, we report the first total synthesis of preswinholide A (2), the biosynthetic precursor of 1.⁶

As outlined in Scheme 1, the complete carbon skeleton of preswinholide A (2) was anticipated to arise from the union of C₁-C₁₅ aldehyde 4^{5b} with C₁₉-C₃₂ aldehyde 5^{5c} using butanone synthon 6 as a linking unit. Such an approach should provide optimum flexibility in the order of events required for stereocontrol in this demanding coupling process. We initially decided to attach the C₁₆-C₁₈ linker unit to 5 and investigate the stereoselectivity of the C₁₅-C₁₆ aldol bond construction between the derived ethyl ketone and aldehyde 4.

The stereocontrolled conversion of 5 into ethyl ketone 8 was readily accomplished in three steps (Scheme 2). Reaction of aldehyde 5 with allylsilane 7⁷ promoted by TiCl₄ (1 equiv, CH₂-Cl₂, -90 °C) gave the 19R allylic alcohol in 94% yield with 95% ds (via Felkin-Anh control).^{5d} Ozonolysis of the olefin and formation of the *p*-methoxybenzyl (PMB) ether then gave 8 (57% overall yield from 5). Regio- and stereoselective coupling of the enantiomerically pure subunits 4^{5b} and 8 was best achieved using a boron-mediated anti aldol reaction.⁸ Addition of (*E*)-enol dicyclohexylborinate 9, selectively generated from 8 using (*c*-C₆H₁₁)₂BCl/Et₃N in Et₂O,⁹ to 4 gave an 83% yield of diaster-

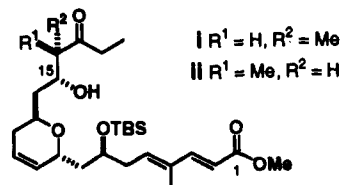


omeric aldol products (52:35:13). Separation by preparative HPLC gave the two anti aldol isomers 10 and 11.^{10,11} The major isomer 10 (40% yield) had the correct relative stereochemistry¹¹ of the C₁₆ methyl but required inversion of the C₁₅ hydroxyl group. Using catecholborane in THF,¹² reduction of the C₁₇ ketone in 10 gave the corresponding syn 1,3-diol in 93% yield and ≥95% ds. Treatment with DDQ under anhydrous conditions induced

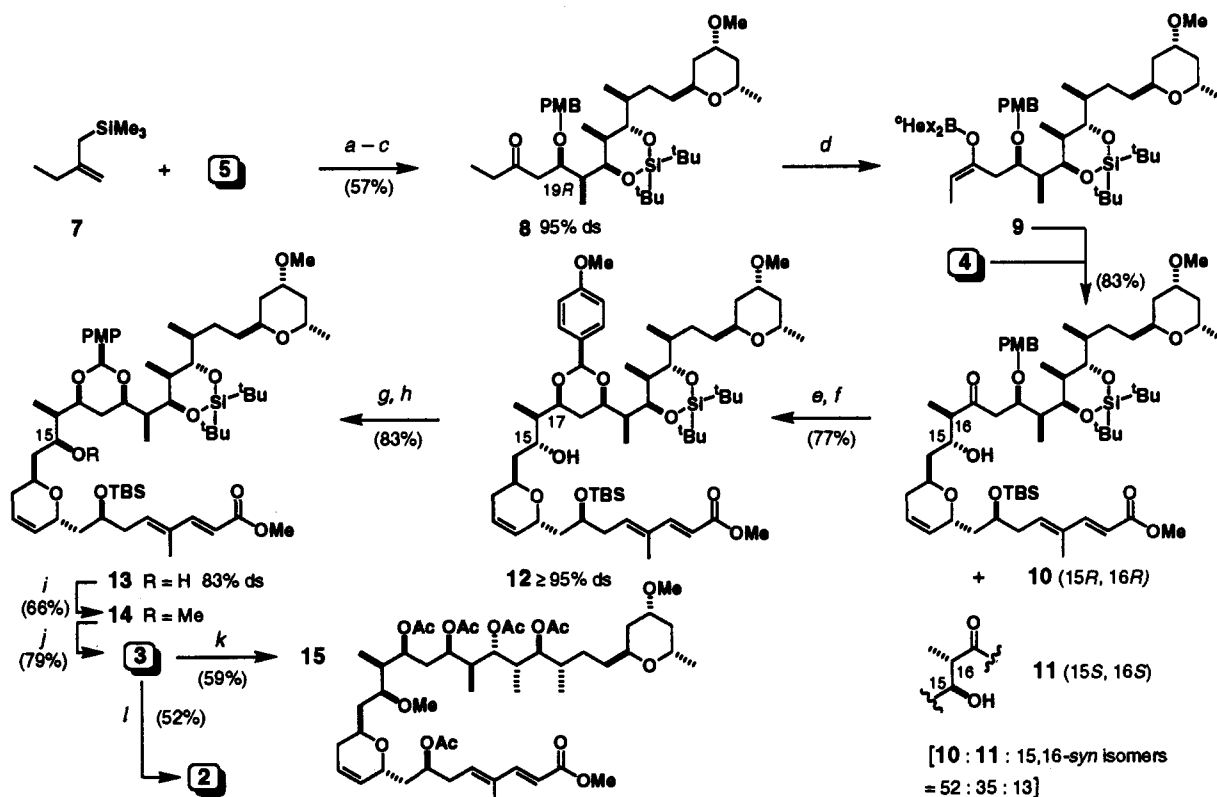
- (1) Carmely, S.; Kashman, Y. *Tetrahedron Lett.* 1985, 26, 511.
 (2) (a) Kobayashi, M.; Tanaka, J.; Katori, T.; Matsuura, M.; Kitagawa, I. *Tetrahedron Lett.* 1989, 30, 2963. (b) Kitagawa, I.; Kobayashi, M.; Katori, T.; Yamashita, M.; Tanaka, J.; Doi, M.; Ishida, T. *J. Am. Chem. Soc.* 1990, 112, 3710. (c) Kobayashi, M.; Tanaka, J.; Katori, T.; Matsuura, M.; Yamashita, M.; Kitagawa, I. *Chem. Pharm. Bull.* 1990, 38, 2409. (d) Doi, M.; Ishida, T.; Kobayashi, M.; Kitagawa, I. *J. Org. Chem.* 1991, 56, 3629.
 (3) (a) Tsukamoto, S.; Ishibashi, M.; Sasaki, T.; Kobayashi, J. *J. Chem. Soc., Perkin Trans 1* 1991, 3185. (b) Kobayashi, M.; Tanaka, J.; Katori, T.; Kitagawa, I. *Chem. Pharm. Bull.* 1990, 38, 2960.
 (4) Todd, J. S.; Alvi, K. A.; Crews, P. *Tetrahedron Lett.* 1992, 33, 441.
 (5) (a) Paterson, I.; Smith, J. D. *J. Org. Chem.* 1992, 57, 3261. (b) Paterson, I.; Smith, J. D. *Tetrahedron Lett.* 1993, 34, 5351. (c) Paterson, I.; Cumming, J. G. *Tetrahedron Lett.* 1992, 33, 2847. (d) Scytophycin C: Paterson, I.; Yeung, K.-S. *Tetrahedron Lett.* 1993, 34, 5347.
 (6) Presented at the 13th International Symposium on Organic Synthesis of the Royal Society of Chemistry (Perkin Division), Oxford, UK (July 22, 1993).
 (7) Allylsilane 7 was prepared from EtCO₂Et by (i) Me₃SiCH₂MgCl, CeCl₃, THF; (ii) SiO₂, CH₂Cl₂. Narayanan, B. A.; Bunnelle, W. H. *Tetrahedron Lett.* 1987, 28, 6261.
 (8) A syn aldol coupling of the (*Z*)-enol di-*n*-butylborinate derived from 8 (*n*-Bu₂BOTf, *i*-Pr₂NEt) with aldehyde 4 was first explored. This led to the undesired syn isomer (i.e., having the bis-*epi* 15R, 16S stereochemistry for the swinholides) with 77% ds. Attempted use of (+)-Ipc₂BOTf in this reaction, to confer reagent control, was unsuccessful and only gave traces of aldol products. Paterson, I.; Goodman, J. M.; Lister, M. A.; Schumann, R. C.; McClure, C. K.; Norcross, R. D. *Tetrahedron* 1990, 46, 4663.
 (9) (a) Brown, H. C.; Dhar, R. K.; Bakshi, R. K.; Pandiarajan, P. K.; Singaram, B. *J. Am. Chem. Soc.* 1989, 111, 3441. (b) Brown, H. C.; Dhar, R. K.; Ganesan, K.; Singaram, B. *J. Org. Chem.* 1992, 57, 449.

(10) The anti relative stereochemistry assignment at C₁₅ and C₁₆ was based primarily on the well-precedented use of (*c*-C₆H₁₁)₂BCl to generate anti aldol products (cf. ref 9) and on the fact that the two isomers formed using this reagent were clearly different from those isolated from the syn-selective aldolization using *n*-Bu₂BOTf (cf. ref 8). Unambiguous determination of the C₁₅-C₁₆ relative stereochemistry by ¹H NMR was not possible since one syn and both anti aldol products show similar *J* values (ca. 7 Hz).

(11) The 15R stereochemistry in 10 was inferred on the basis of similarities in the ¹H NMR spectra to model compounds i and ii, where the configuration had been determined by ¹H NMR analysis of the derived (*R*)- and (*S*)-MPTA esters. Ohtani, I.; Kusumi, T.; Kashman, Y.; Kakisawa, H. *J. Am. Chem. Soc.* 1991, 113, 4092.



(12) Evans, D. A.; Hoveyda, A. H. *J. Org. Chem.* 1990, 55, 5190.

Scheme 2^a

^a Reagents and conditions: (a) TiCl_4 , CH_2Cl_2 , -90°C , 0.5 h; (b) O_3 , $\text{CH}_2\text{Cl}_2/\text{MeOH}$, -78°C , 15 min; Me_2S , $-78 \rightarrow 20^\circ\text{C}$, 3 h; (c) $\text{PMBOC}(\text{CCl}_3)=\text{NH}$, TfOH (0.5 mol %), Et_2O , 20°C , 1 h; (d) $(\text{C}_6\text{H}_{11})_2\text{BCl}$, Et_3N , Et_2O , $-40 \rightarrow 0^\circ\text{C}$, 2 h; **4**, $-78 \rightarrow 20^\circ\text{C}$, 20 h; H_2O_2 , MeOH , 0°C , 0.5 h; (e) catecholborane, THF , $-78 \rightarrow 20^\circ\text{C}$, 23 h; (f) DDQ , 4-Å molecular sieve powder, CH_2Cl_2 , 20°C , 0.5 h; (g) Dess–Martin periodinane, CH_2Cl_2 , 20°C , 0.5 h; (h) $\text{LiAlH}(\text{O}-t\text{-Bu})_3$, Et_2O , THF , 0°C , 0.5 h, then -20°C , 18 h; (i) MeOTf , 2,6-di-*tert*-butylpyridine, 50°C , 4.25 h; (j) 40% aqueous HF , MeCN , $0 \rightarrow 20^\circ\text{C}$, 2 h; (k) Ac_2O , pyridine, DMAP , 20°C , 18 h; (l) NaOH , MeOH , H_2O , 20°C , 5 h.

the cyclization of the strategically positioned C_{19} PMB ether¹³ onto the C_{17} hydroxyl to give an 83% yield of the *p*-methoxybenzylidene acetal **12**. Subsequent oxidation using the Dess–Martin periodinane,¹⁴ followed by reduction using $\text{LiAlH}(\text{O}-t\text{-Bu})_3$, gave the 15*S* alcohol **13** in 83% overall yield and up to 83% ds.¹⁵ Aldol adduct **11** can also be used productively in the synthesis of preswinholide A,¹⁶ by conversion into the ketone precursor of **13** by a four-step sequence involving epimerization at C_{16} . With all the stereocenters required for preswinholide A intact, the C_{15} hydroxyl group was methylated ($\text{MeOTf}/2,6\text{-di-}t\text{-butylpyridine}$ ¹⁷) to give the fully protected secoacid **14**, $[\alpha]_D^{20} = -84.3^\circ$ (c 1.6, CHCl_3), in 66% isolated yield (plus 12% recovered starting material).

Removal of all the hydroxyl-protecting groups was accomplished in a single step in 79% yield using aqueous HF in MeCN . The resulting, known^{2b} pentaol **3**, $[\alpha]_D^{20} = -42^\circ$ (c 0.61, CHCl_3) (*cf.* lit.² $[\alpha]_D^{20} = -31^\circ$ (c 2.8, CHCl_3)), exhibited ^1H NMR data (CDCl_3 and C_6D_6) in accord¹⁸ with the published values and copies of the ^1H NMR spectrum (CDCl_3) provided by Professor Kitagawa. In addition, **3** was converted into its pentaacetate **15**, $[\alpha]_D^{20} = -26^\circ$ (c 0.45, CHCl_3) (*cf.* lit.^{3b} $[\alpha]_D^{20} = -22^\circ$ (c 0.62, CHCl_3)), which has also been prepared from natural material.^{3b} All NMR data (^1H , ^{13}C , COSY and HETCOR) were in total agreement¹⁸ with the literature values. Finally, **3** was hydrolyzed (NaOH , aqueous MeOH) to give preswinholide A (**2**), $[\alpha]_D^{20} =$

-24.0° (c 0.25, MeOH) (*cf.* lit.^{3a} $[\alpha]_D^{20} = -29.0^\circ$ (c 1.0, MeOH)), in 52% yield following reverse-phase HPLC.

In summary, the first total synthesis of (-)-preswinholide A, the biosynthetic precursor to swinholide A, has been completed using a boron-mediated anti aldol reaction for the coupling of the complex fragments **4** and **8**. This work shows that we have all of the 15 stereogenic centers and suitable protecting groups in place for eventual elaboration of secoacid derivative **14** into swinholide A.

Acknowledgment. We thank the SERC (GR/H01922), Rhône-Poulenc Rorer (Dagenham), Zeneca Pharmaceuticals (Alderley Park), and Merck Sharp & Dohme (Terlings Park) for their support and Professor I. Kitagawa (Osaka University) for kindly providing us with copies of NMR spectra and an authentic sample of the methyl ester **3**.

Supplementary Material Available: Listing of spectroscopic and physical data for compounds **2**, **3**, **10**, and **15**, and copies of ^1H and ^{13}C NMR spectra (16 pages). This material is contained in many libraries on microfiche, immediately follows this article in the microfilm version of the journal, and can be ordered from the ACS; see any current masthead page for ordering information.

(13) Oikawa, Y.; Yoshioka, T.; Yonemitsu, O. *Tetrahedron Lett.* **1982**, 23, 889.

(14) Dess, D. B.; Martin, J. C. *J. Am. Chem. Soc.* **1991**, 113, 7277.

(15) The minor component from this reaction is alcohol **12** and is therefore recyclable.

(16) The methyl ester of 16-*epi*-preswinholide A was also prepared from **11**. It showed substantially different ^1H NMR spectral data from that of **3**.

(17) (a) Walba, D. M.; Thurmes, W. N.; Haltiwanger, R. C. *J. Org. Chem.* **1988**, 53, 1046. (b) Evans, D. A.; Sheppard, G. S. *J. Org. Chem.* **1990**, 55, 5192.

(18) While the ^1H NMR spectrum of synthetic **2** in CDCl_3 was identical to that obtained for a sample of **3** derived from natural material, the spectra acquired in C_6D_6 exhibited a significant concentration dependence. This effect was more pronounced in the ^{13}C NMR spectra obtained for synthetic **3** in both CDCl_3 and C_6D_6 . In the latter solvent, all of the ^{13}C chemical shifts of our most concentrated sample agreed within ± 0.5 ppm. These observations led us to prepare the less polar pentaacetate **15**, which exhibited ^1H , ^{13}C , COSY and HETCOR NMR (CDCl_3), IR (CCl_4), and FAB (glycerol matrix) mass spectral data in full agreement with the literature values (*cf.* ref 3b).